

Oslo Airport: Fluid-Bag and Trysil Maskin, a Norwegian manufacturer of high quality road marking equipment



# Fluid-Bag for road marking paint

Easy logistics for application of road marking paint



✉ [solutions@fluid-bag.com](mailto:solutions@fluid-bag.com)

🌐 [www.fluid-bag.com/automotive](http://www.fluid-bag.com/automotive)



# Fluid-Bag for road marking paint

## Easy logistics for application of road marking paint



*Fluid-Bag Multi containers on paint truck*

Fluid-Bag is a frequently used solution for easy application of road marking paint. Fluid-Bags filled with road marking paint can either be connected directly to the airless paint guns on a truck, or used to refill the paint-pots on the conventional line-stripping truck.

### **Fresh road marking paint without any skinning**

Fluid-Bag maintains the quality of the paint the whole season. There is no need to open the top of the container during the discharge process, and the Fluid-Bag flexible layers make sure that no air or moisture gets in touch with the paint. As a result, the paint can be stored for a longer period and there is still no risk for skinning that might block the paint guns. The Fluid-Bag can also be used half-full, without risk for skinning.

### **No extra waste due to insufficient discharge**

The discharge procedure of a Fluid-Bag is easier than most other solutions. It is very efficient, as low as 0.5% residue. Product loss due to insufficient discharge is minimized and the utility grade of the paint is as high as possible.

### **Easy handling with the stable, stackable Fluid-Bag**

Stacking of full containers is no problem, even though road marking paint is usually quite heavy about 1.6 kg/l (13.4 lbs/gal). The Fluid-Bag is still stable enough for stacking full containers 2-high (Flexi-containers) and 3-high (Multi containers).



# Fluid-Bag for road marking paint

## Easy logistics for application of road marking paint



*Fluid-Bag Flexi components. From the left: inner container, pallet, transport bag*

### Fluid-Bag is disposable and empty containers significantly reduce the yard stacking space

Paint contractors often comment totes require significant storage space for empty totes (example: 12 totes across, three totes deep, and 4 totes high.) The stacked totes also reduce parking and maneuvering space for the paint trucks.

When empty, the single-use Flexi-container disassembles into a pallet, with wood poles and the empty bag on top of the wood pallet. This means 144 empty Flexi units can be disassembled and stacked compared with the space of 18 empty totes..

### Fluid-Bag simplifies disposal

It is reported tote manufacturers are reluctant to retrieve totes from "random" locations, and prefer there be 52 empty totes at a single location before a truck is dispatched for pick-up.

Paint stripe contractors do not possess the time to drain and clean totes, as that reduces the number of lane miles which can be painted each day by each painting crew.

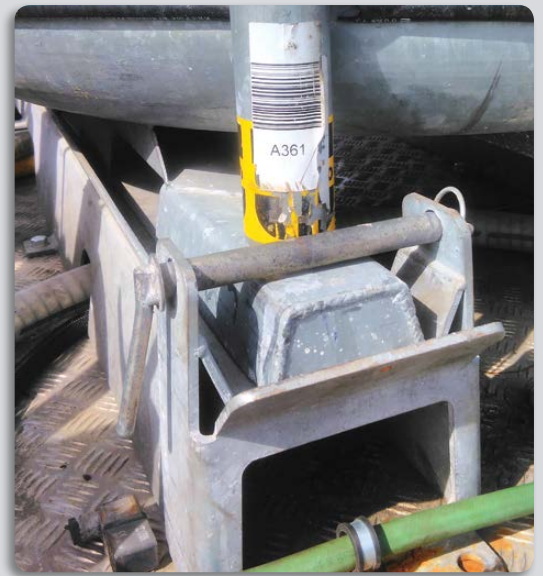
Draining and cleaning totes at remote locations requires significant time to tip each tote and allow excess paint to drain out. After draining paint, residue often remains at the bottom corners of each tote, which does not meet the requirements of the EPA. Tote manufacturers also require the "empty" totes be drained and washed-out, or the tote will not be accepted for return.

Fluid-Bag units are discharged with +99% efficiency so the direct disposal to a licensed landfill is accomplished without additional cleaning steps. Plus, the risk of contaminated paint is reduced because the Flexi-units are used only once.





*Pneumatic stretching arm on paint truck*



*Multi "hold down" mechanism on paint truck*



## Fluid-Bag FLEXI

The one-way option, 900 and 1000 l.

Includes a single-trip inner container, transport bag and wooden pallet.



## Fluid-Bag MULTI

The multi-trip container with a single-use inner bag, 900 and 1000 l.

Includes a disposable inner container, reusable transport bag (up to 25 trips) and a steel pallet (>100 trips).